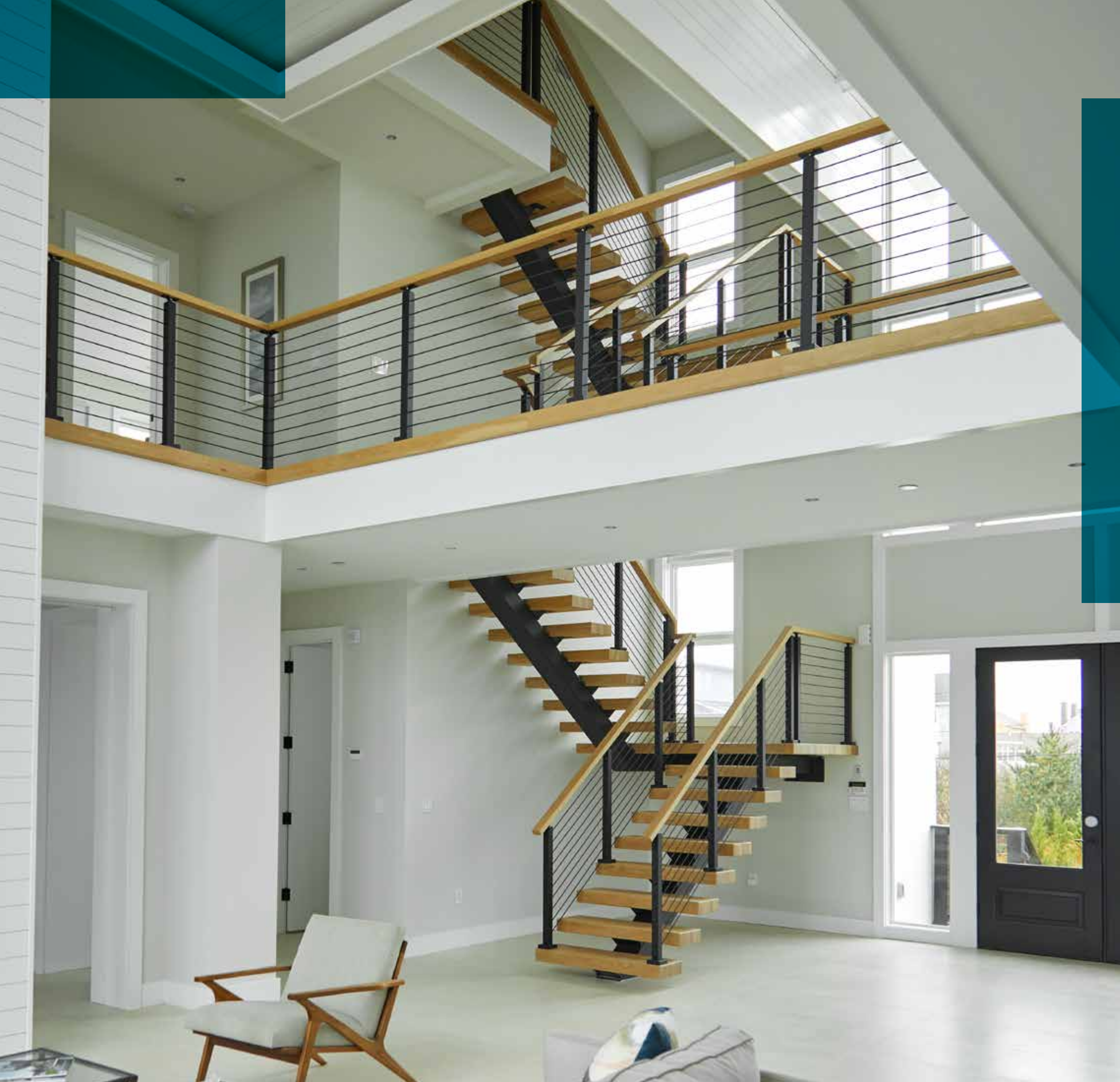




VIEWRAIL

Modern Stairs + Railing
2020 Buyer's Guide



Send the details.

Take a few measurements and send them to us. One of our techs will call and walk you through it.

We'll design and engineer it.

Based on the details you sent, our Design Team will figure out exactly you need and prepare a quote for you, complete with a 3D rendering of your order. Once you're ready to move forward, our engineers will customize everything for a perfect fit.

We'll make it.

After you sign off on the engineering drawings, we'll use our state of the art robotic and CNC machinery to manufacture your order, right here in Indiana.

You install it. We'll help.

We'll ship it all to your jobsite in clearly marked packages so you know exactly where everything goes. Whether your going DIY on it or bringing a small crew, we'll supply image-based written and video instructions, as well as installation kits to outfit your job for success.

- 4 Stairs
- 12 Frameless Glass Railing
- 18 Signature Posts
- 20 Gates + Handrail
- 22 Glass Infill
- 24 Rod Infill
- 26 EXPRESS Cable Railing
- 28 DriveTite
- 30 Installation

Meets Handrail Code*

Our Cap Rail meets code for graspable handrail. It's available in stainless steel (shown) or any of our wood species and stain combinations.

Furniture-Grade Hardwood

Terrace is completely wrapped in the hardwood species and stain combination of your choice. Shown in Red Oak with our Antique Gray stain.

"This thing is magical!"

This is an actual quote from a customer after experiencing the effortless appearance of Terrace's hidden glass railing attachment.

Terrace
New Stairs for 2020



Modern Railing Options

Want Frameless Glass? Post Glass? Onyx Rods? Cable? We've got it all. You can match the handrail with your treads or with our architecturally sleek metal handrail.

Steel Stringer

Available as a Straight, 90° Turn, Switchback, U-Turn, or a custom configuration, the stringer can be powder coated in any of our available colors. (see page 19 for colors)

Viewrail FLIGHT
Complete Stair Solution

Thick Hardwood Treads

In practically any wood species you can imagine with virtually any stain, our treads are as beautiful as they are sophisticated. Each one is routed and pre-drilled for simple installation.

Thick Treads

We start with lumber that is rated *select and better*, kiln dried to just the right moisture levels for maximum stability. Wood pieces are then hand-selected to best match color and grain. After gluing into a butcher block, the treads are formed on our precision CNC machines for consistent accuracy.

Now it's time for craftsmanship that is best delivered by the human touch of our well-trained finishing team. Each tread is hand-sanded and inspected before making its way to the finish room, where it will be stained and clearcoated to a furniture-grade finish.

Tread Designs for 2020

Butcherblock Tread

This is the standard that all of our treads are based on.



Beveled Tread

This exciting new design features tapered vertical sides with all of the edges beveled.



Urban Thick Tread

Hardwood butcherblock with a decorative strip of stainless steel.



Artisan Thick Tread

Hardwood butcherblock with a relief routed all the way around.



Granite Top Tread

Your choice of granite atop a painted poplar base.



Popular Woods for a Natural Finish

<p>Walnut Density: 1010 Price: \$\$\$</p> <p>Unfinished Clearcoated</p>	<p>Brazilian Cherry Density: 2350 Price: \$\$\$</p> <p>Unfinished Clearcoated</p>
<p>Tigerwood Density: 2160 Price: \$\$\$</p> <p>Unfinished Clearcoated</p>	<p>American Cherry Density: 960 Price: \$\$</p> <p>Unfinished Clearcoated</p>

Popular Woods for a Stained Finish

<p>Ash Density: 1320 Price: \$\$</p> <p>Unfinished Clearcoated Acorn Acres Coffee Copper Blush Kona Midnight Pewter Storm Gray Lodge Brown Antique Gray Charcoal Blonde Weathered Gray</p>
<p>Red Oak Density: 1290 Price: \$</p> <p>Unfinished Clearcoated Acorn Acres Coffee Copper Dark Knight Kona Golden Brown Golden Honey Malaguania New Carrington Sealy Gunstock Antique Gray Wheat</p>
<p>White Oak Density: 1360 Price: \$\$</p> <p>Unfinished Clearcoated Asbury Biar Chocolate Spice Copper Dark Knight Driftwood Golden Brown Light Asbury Malaguania Sealy Storm Gray Antique Gray</p>
<p>Hard Maple Density: 1450 Price: \$</p> <p>Unfinished Clearcoated Acres Chocolate Spice Coffee Kona Malaguania New Carrington Sealy Wheat Antique Gray</p>
<p>Hickory Density: 1820 Price: \$</p> <p>Unfinished Clearcoated Acres Asbury Coffee Kona Dark Knight New Carrington Storm Gray Wheat Antique Gray</p>



New Beveled Tread in Clearcoated Walnut

We offer many other species. If you don't see what you're looking for here, contact our Design Team to discuss our full range of options.



Vedera Glass
Special FLIGHT-only Railing



Viewrail Edge
New Railing for 2020



Perfect for Level Runs,
or on the Stairs

Ascend Talons
New Frameless Glass for 2020

Gorgeous in Stainless
or Powder Coat Colors

Frameless Glass

Glass panels are incredibly strong and safe, not to mention elegant and modern. There's no other railing like it when it comes to preserving your view and opening up your living space.

Frameless Glass Options for 2020

Ascend Surface Talons

New for 2020, this glass mounting system is great for level and stairs. Comes in brushed stainless steel or any of our powder coat colors.



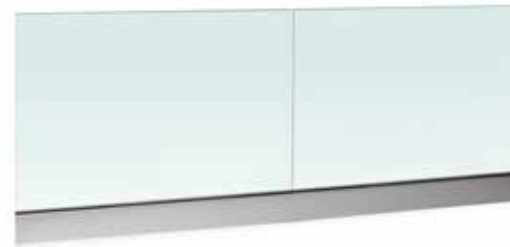
Standoff Pins

Beautifully minimal, these can be arranged in many flexible patterns. Aluminum version available that is great for powder coating and highly adjustable.



Base Rail

Hidden fasteners within this sleek, floor-level fixture tilt and lock for easy glass panel alignment. No holes in the panels make this a simple installation.



Sidemount Talons

Being fascia-mounted, this glass hardware is mostly hidden from view, like Standoff Pins, but with a bulkier presence. Tilt Lock installation makes panel alignment easy.



Surface Talons

Great for level applications, these easy-to-install talons make an impression with their minimal and faceted look. These also have Tilt Lock glass panel alignment.



Below, you'll see our current offerings for frameless glass mounting hardware. If you're interested in post-mounted glass railing, you'll find those options in the section on Glass Infill for premium posts.

Frameless Glass Accessories

Cap Rail

A cap rail is a U-shaped railing that fits on top of glass panels in a frameless glass application. They can be useful for keeping glass panels aligned, meeting code for 'graspable handrail,' or creating a finished look. We offer square stainless steel, round stainless steel, or square wood.

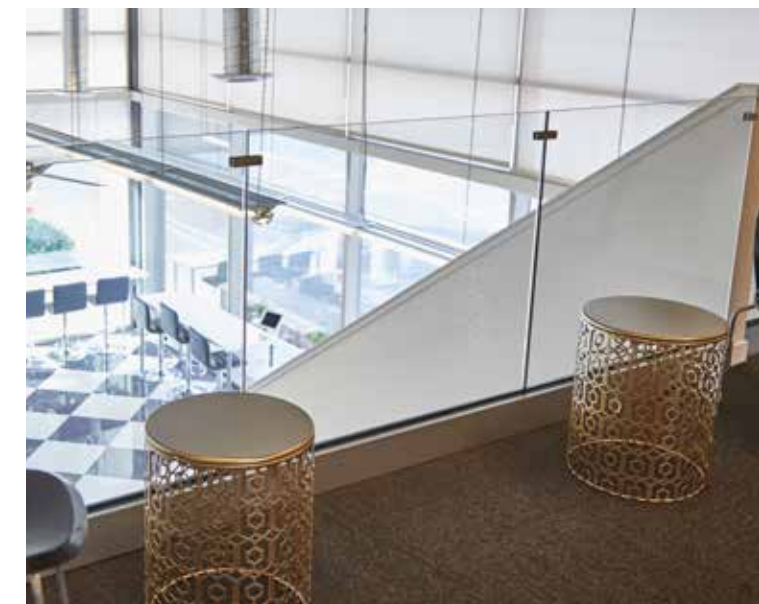
Cap Rail Accessories

To nicely finish off our cap rail, we carry a full compliment of end caps, corners, and couplers for round and square.



Glass Panel Stabilizers

For optional use with frameless glass applications, Glass Panel Stabilizers connect glass panels, helping with panel alignment and reducing side load stress by distributing any load over multiple panels.





Low-iron Glass for
Maximum Clarity

Glass Panels
In-House Panel Fabrication

We've got this.

Design.

Our engineering team will draw your whole project, including the glass panels. These drawings ensure speed and accuracy for the panel fabrication process.

Fabricate.

Once you've approved the drawings, the glass plant will use them to automate the cutting and drilling of your glass panels. Their edges are formed into jewel-like bevels (shown above) as they make their way to the oven for tempering.

Deliver.

This is the best part: because you're not dealing with a 3rd party glass provider, we can coordinate the shipping of your glass panels and hardware to make the installation process more efficient and on schedule.

Signature Posts

Posts have been the cornerstone of our railing from the very beginning. Starting with the best materials, engineering for strength, designing for elegance, and planning for ease-of-installation, these

architecturally-correct posts fit seamlessly into today's modern decor. Our in-house powder coating provides high-durability finishes in an array of colors, so you'll always be able to express your style.

Materials & Finishes

Our post materials have been carefully chosen for beauty and strength. These materials include 2205 marine-grade stainless steel, 304 stainless steel, and aluminum.

We offer a brushed finish as well as the popular powder coat colors shown on the next page.

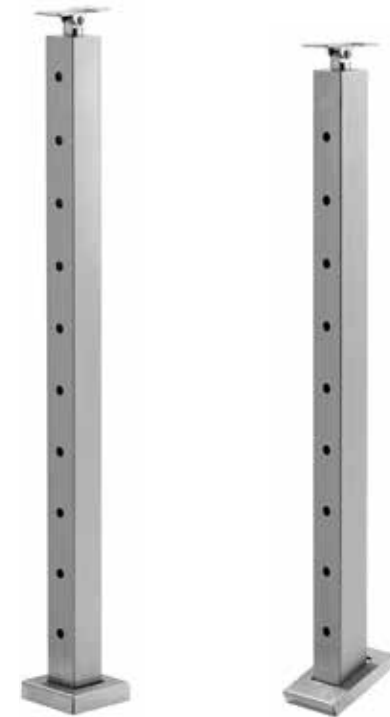
Foot Covers

Foot Covers slide over the post and cover the mounting screws to further drive home the Viewrail look of simplicity and elegance.

Split Foot Covers are made to be added to any post after installation. Foot Covers and Split Foot Covers are also available for our Angle Foot Posts no matter the angle.

Post Tops

Our posts are available in Universal Top or Flat Top configurations. The Flat Top is made only for level runs, while the Universal Top handles both level and angle runs with strength and grace.



**Surface Mount
w/ Foot Cover**

**Angle Foot Post
w/ Foot Cover**

Signature Post Mounting Options



**Side Mount
(fascia mount)**

**Slim Side Mount
(fascia mount)**

**Side Mount
Bump Out
(fascia mount)**

Core Drill

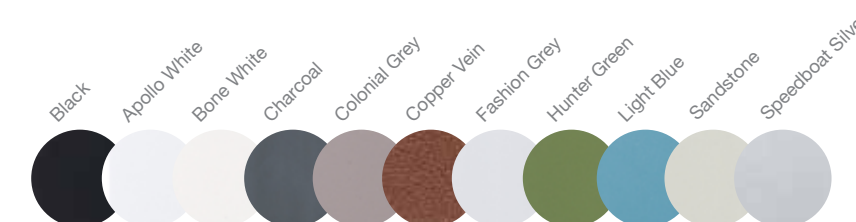
**Special Application
(concrete mount)**



**Universal Top
for Level or Angle**

**Flat Top
Level runs only**

Powder Coat Color Options



Standard Colors
Standard durability, Semi-Gloss



Fluoropolymer Colors
High durability, Glossy



Gates & Handrail

The Universal Top Gate creates clean lines by matching the mounting look of our Universal Top posts, as well as continuous lines between cable railing and the stainless rods infill of the gate.

The Flat Top Gate is designed to match each system's handrail height, maintaining a seamless flow. All of our gates are welded for maximum strength and durability, making safety a beautiful thing.

Materials & Finishes

Viewrail Gates of all sizes are made from marine-grade stainless steel. All standard finishes are available.

Stock Gate Sizes

In an effort to keep lead times low, we stock gates in our most popular sizes. Engineering-approved custom sizes are available with extended lead times. Our stock gate sizes are listed below.

- 39" wide by 36" tall
- 42" wide by 39" tall
- 39" wide by 42" tall

Industry-Leading Hardware

All Gates can be installed with two self-closing hinges and a self-closing latch. (sold separately). This gate attachment system promotes customer safety and lasting strength. Latches and hinges are shipped loose and installed on the job site. This allows the customer to choose swing direction and achieve a precise fit.



Single Gate



Gate Latch



Drop Bolt



Double Gate

Double Gates

Our Double Gates are available for openings wider than 48" but no wider than 96". All Double Gates require our robust hinge post.

Handrail Options

The Warmth of Wood

Wood handrail solutions are frequently used with our cable rail system. We offer architecturally correct handrails in dozens of wood species that are great for interior or exterior use. With so many species, stains, and profiles available, your design creativity can run wild.

A Modern Masterpiece

Our 1" x 2" rectangular handrail is made to perfectly compliment our 2" square posts. The combination is a simply stunning display of modern elegance. It comes in brushed marine-grade stainless steel, 304 stainless steel, or aluminum. The ends can be cut to fit on site and finished with a matching end cap.

The Circumference of Comfort

Some of our customers won't accept anything less than round handrail. They love the way it looks and feels. We craft it out of stainless steel, perfect for a brushed finish or powder coating. We also make handrail brackets that have been specially designed to fit our round handrail.



Brazilian Cherry 6002 Handrail



1" x 2" Stainless Steel Handrail



2" Stainless Steel Round Handrail



Handrail Caps
(cover transitions)



Handrail End
Caps



Round Handrail
Fittings





Glass Infill

Glass Infill with Viewrail Signature Posts combines the clear elegance and open concept of glass with the strong presence and clean lines of our posts. This popular look can be topped with sleek metal

handrail, or warm it up with your choice of 17+ wood species. When used in exterior applications, Glass Infill can greatly reduce unwanted wind and noise, compared to other railing infill options.

Post Glass

This option offers the clean look you expect from glass railing with the elegance of our architecturally correct posts. Clips and posts can be powder coated to please a wide range of aesthetic tastes.



Barrier Post Glass

The barrier posts are shorter than average, allowing the glass panel itself to cleanly meet your railing height requirements.



Glass Clips

All of our Glass Clips are made from stainless steel for superior strength and corrosion resistance. We have clips that support 3/8", 1/2", or 9/16" glass.



Glass Clip
(front)



Glass Clip
(back)





Rods Infill

Viewrail Rod Railing is both simple and durable, flexible enough to curve around a radius, and firm enough to provide a strong railing. Each Rod has a 1/4" diameter and is made out of corrosion

resistant 2205 stainless steel, able to stand up to the wear and tear of corrosive ocean air and look good doing it. Rod railing provides safety and a great modern look without looking bulky and industrial.

Low Maintenance Luxury

While other railing systems may deflect, sag, or bend, over time, Rod Railing will maintain its rigid shape long after installation. They'll never need to be re-tightened and cleaning them is a breeze.

Throw Them a Curve

If your project includes curves, Rod Railing is your answer. Our rods can be ordered in any length from 2' to 20' in one foot increments and can be bent to precise and consistent curves for your specific application.

Installation So Easy

If you've ever installed cable railing, you know that cable can be unruly! Rods cut easily, crimp effortlessly, and feed through posts smoothly.

ONYX RODS

The first all-black system of its kind, Onyx Rods are a premier offering within our Signature Line. The 1/4" rods are made from stainless steel and powder coated black. The posts and handrail are powder coated aluminum or stainless steel. And all the hardware is stainless steel that has gone through an oxidation process to make them black. The Onyx Rods system is design for interior applications only.



EXPRESS CABLE RAILING

Of course we still offer cable infill for our Signature Posts; it's a classic! But this is a different animal altogether.

Close your eyes and imagine a cable railing system, complete with posts, handrail, cable, and all the hardware and components, that you can order today and it will ship tomorrow.

Now open your eyes and read the big words at the top of this page. BOOM. Our EXPRESS cable railing system has been designed to be flexible and fast: great for DIY warriors or anyone who wants to get the job done NOW!

Easy Installation — Visual & Video Instructions

Simple System — 5 Post Types in 36" or 42" Sizes

All Surface Mounted — Hardware Included

Aluminum Posts & Handrail — Black Powder Coat

Field Cut Handrail for a Perfect Fit

SHIPS NEXT DAY

Turn a Corner
with One Post

The faster that cable railing gets done,
the sooner you're in here!

All Mounting Hardware and
Cable Components Included

DriveTite

When you want to attach cable or rods to wood posts, you need DriveTite, our unique mounting system that doesn't require you to drill all the way through the post. Some customers even combine

it with our Signature Series posts when they need to terminate a run into a wall or ceiling. Good for interior or exterior applications, you'll appreciate the simple look and strength of DriveTite.

DriveTite Interior

This is our classic version of DriveTite, the clever cable-mounting components that tighten with an impact driver. Like all Viewrail systems, DriveTite Interior values hidden fasteners, keeping them inside the post so your look is flush and fantastic.

DriveTite Exterior

Formerly known as DriveTite Surface, DriveTite Exterior is loved by installers everywhere for its shallow mounting depth, easy tensioning, and clean look.

DriveTite Rods

All the convenience of DriveTite combined with the smooth durability of stainless steel Rod Railing. Now your wood post railing can be enjoyed with this easy-to-clean infill that will look amazing for years.

At left: DriveTite Exterior gives added safety and flare to a traditional Coastal Carolina look.

At right: Detail shot of DriveTite Rods hardware securing stainless steel Rods to a wooden structure.





Installation

All of our systems have installation kits that come complete with specialized tools to make the job as easy as possible. They also come with one more thing: confidence.

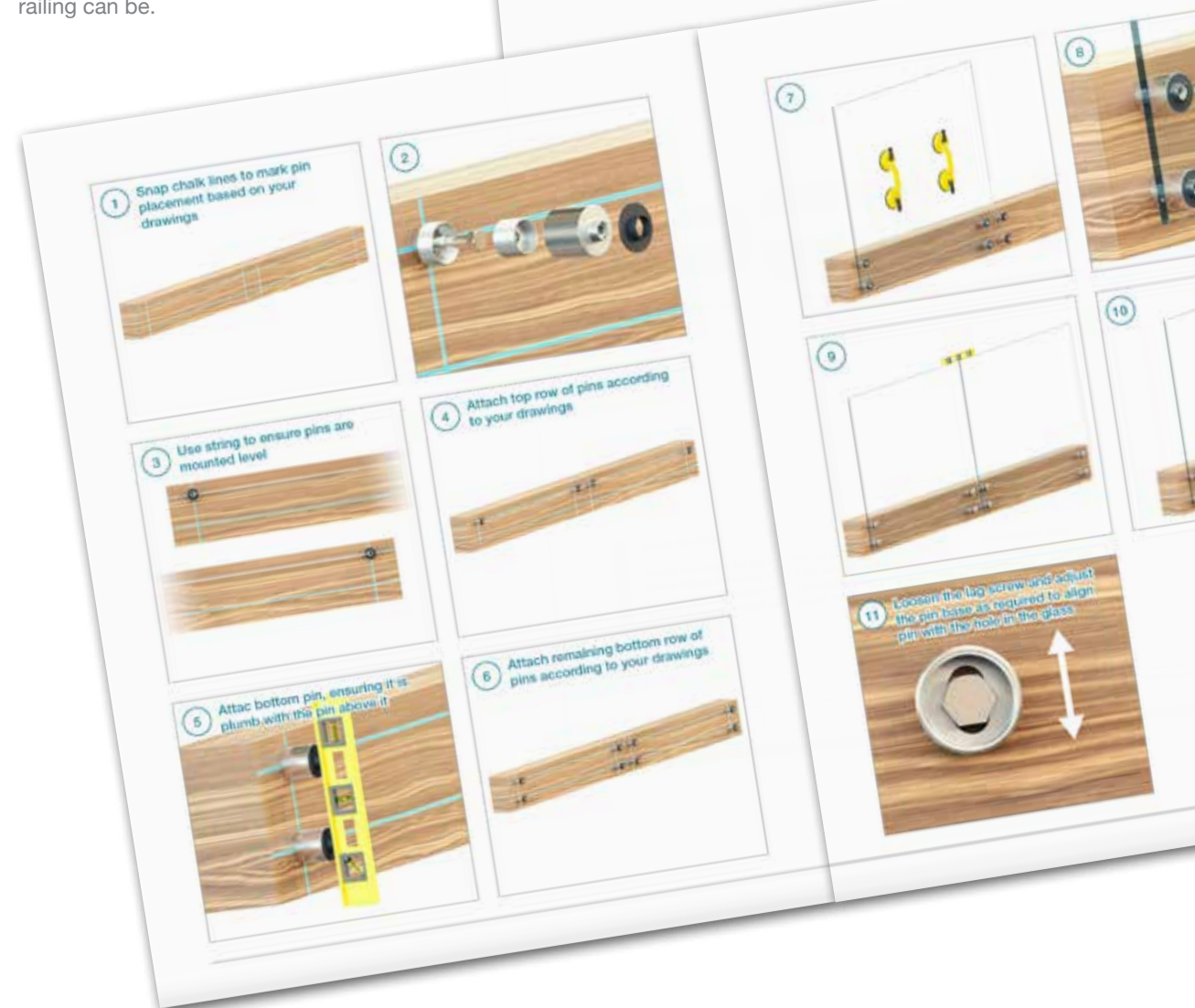
We innovate products with installers in mind, knowing that some will be DIY'ers, and some will be seasoned contractors. We want to empower them all through smart instructions and knowledgeable support.

Visual & Video Instructions

Our new visual approach to instructions offers all the help you need with a lot less reading. In printed and video form, we'll show you how simple elegant stairs and railing can be.



Glass Standoff Pins
Installation Guide





VIEWRAIL