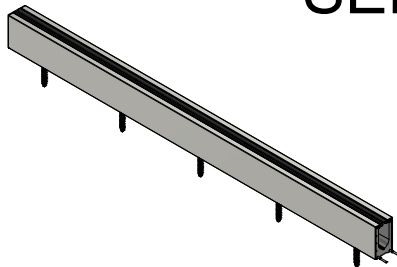



REFERENCE ONLY
SEE PAGE 2 FOR PARTS LIST
SEE PAGE 3 FOR DIMENSIONS



	Part Number: 390316
	Description: Stair Supplies Glass Base Rail Assembly
Revision:	Sheet 1 of 3

PARTS LIST

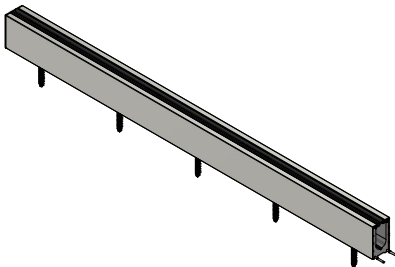
ITEM	QTY	PART NUMBER	DESCRIPTION
1	1	389866	Base Rail 4ft 6in - Machined
2	2	See Reference Chart	Base Rail Cover
3	2	378908	Base Rail Bulb Seal (Cut to Length)
4	4	390317	Pre-Assembled Glass Grips
5	5	362437	1/2" x 4" Hex Head Lag Screw Zinc Plated Steel
6	5	390315	.521 X .934 X .100 Washer
7	2	462722	Base Rail Aluminum Joining Pin
8	2	396445	Base Rail End Cap

INSTALLATION TOOLS

ITEM	QTY PER ORDER	PART NUMBER	DESCRIPTION
9	2	458873	Base Rail Wrench
10	1	271144	End Cap Adhesive
11	Varies	505656	Vinyl Tape

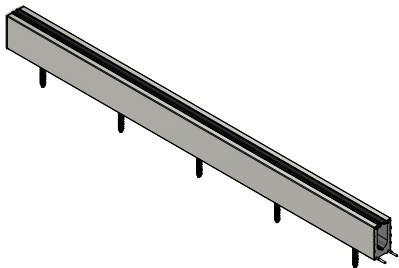
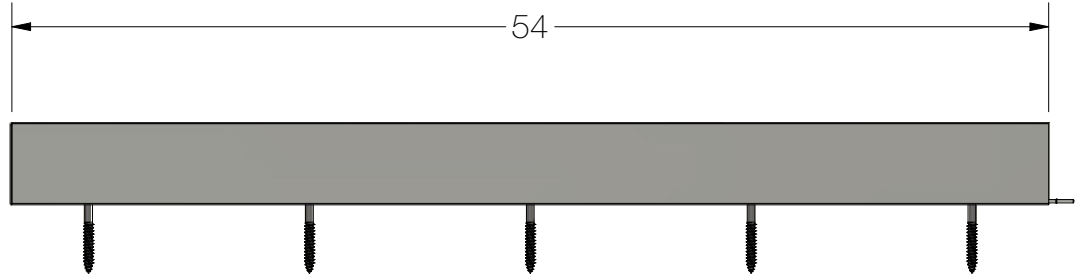
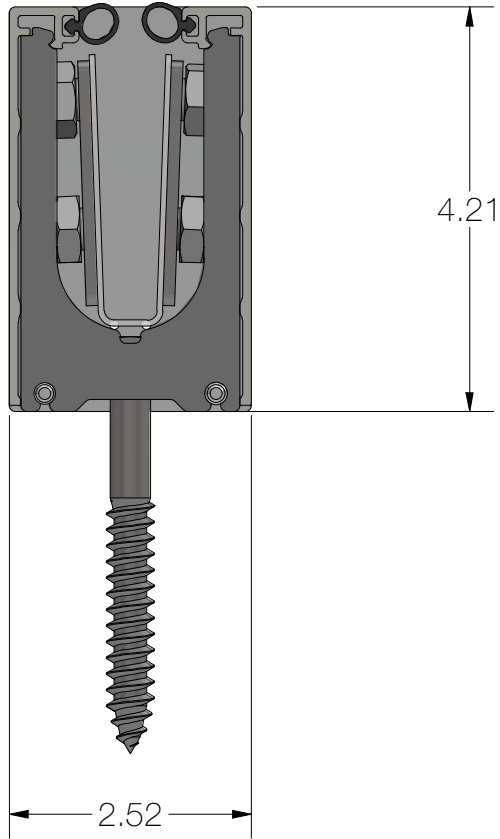
COVER REFERENCE CHART


COVER LENGTH	COVER PART NUMBER
4 FT 6 IN	387797
8 FT	387798
12 FT	387799



REV	DESCRIPTION	DATE	APPROVED	STATUS	Revision:
A				In Development	Part Number: 390316
					Description: Stair Supplies Glass Base Rail Assembly
REVISION HISTORY					Sheet 2 of 3





A				In Development		Part Number: 390316
REV	DESCRIPTION	DATE	APPROVED	STATUS		Description: Stair Supplies Glass Base Rail Assembly
REVISION HISTORY					Revision:	Sheet 3 of 3