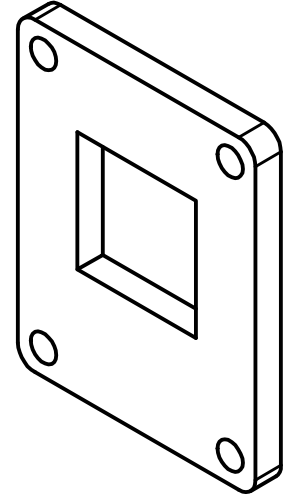
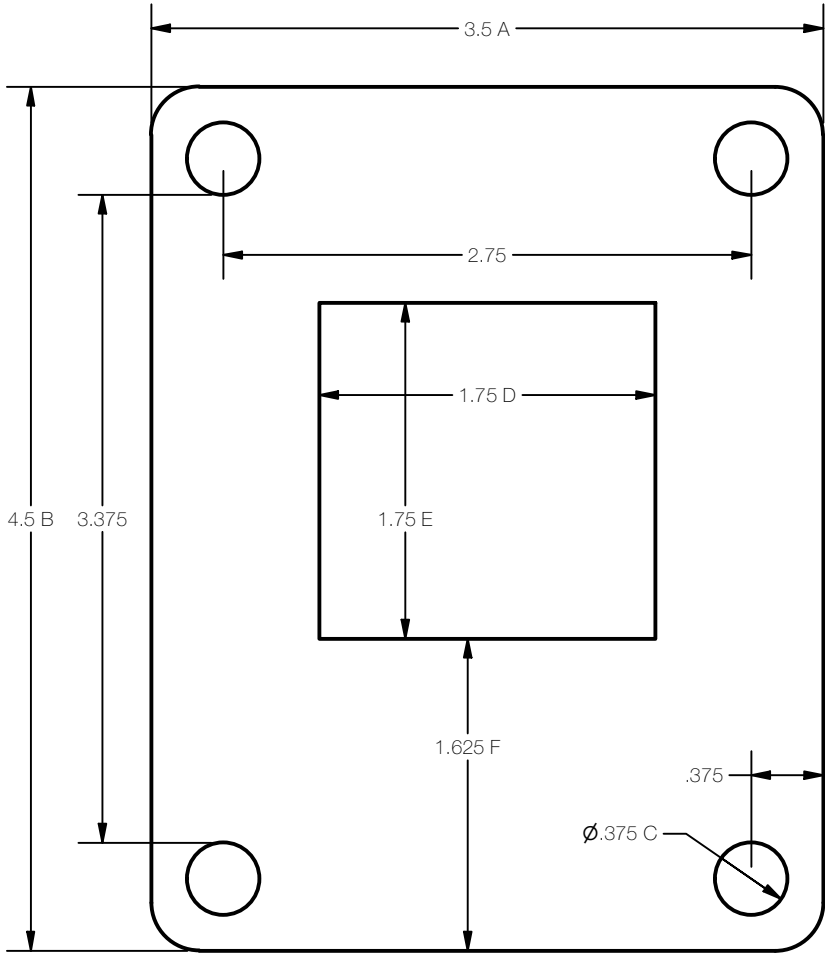


6 5 4 3 2 1

REVISION HISTORY				
ZONE	REV	DESCRIPTION	DATE	APPROVED
	A			
C5	B	Reduced Window Size	01/22/2021	ABM



CRITICAL TOLERANCES		
DIMENTION	TOLERANCE	DEVICE
A	+/- .005	CALIPER
B	+/- .005	CALIPER
C	+.015/-0.0	CALIPER
D	+/- .005	CALIPER
E	+/- .005	CALIPER
F	+/- .005	CALIPER

VIEWRAIL	PART #: 279259		PART NAME: ANGLE FOOT (ALUMINUM).ipt		VIEWRAIL
	DRAWN BY: DMN	DATE: 9/2/2020	STATUS: Released		
TOLERANCES .X = ± .030 .XX = ± .015 .XXX = ± .005			CYCLE TIME:		MATERIAL: 6061 T6 ALUMINUM
SIZE: A		SCALE: 1 : 1		REV:	

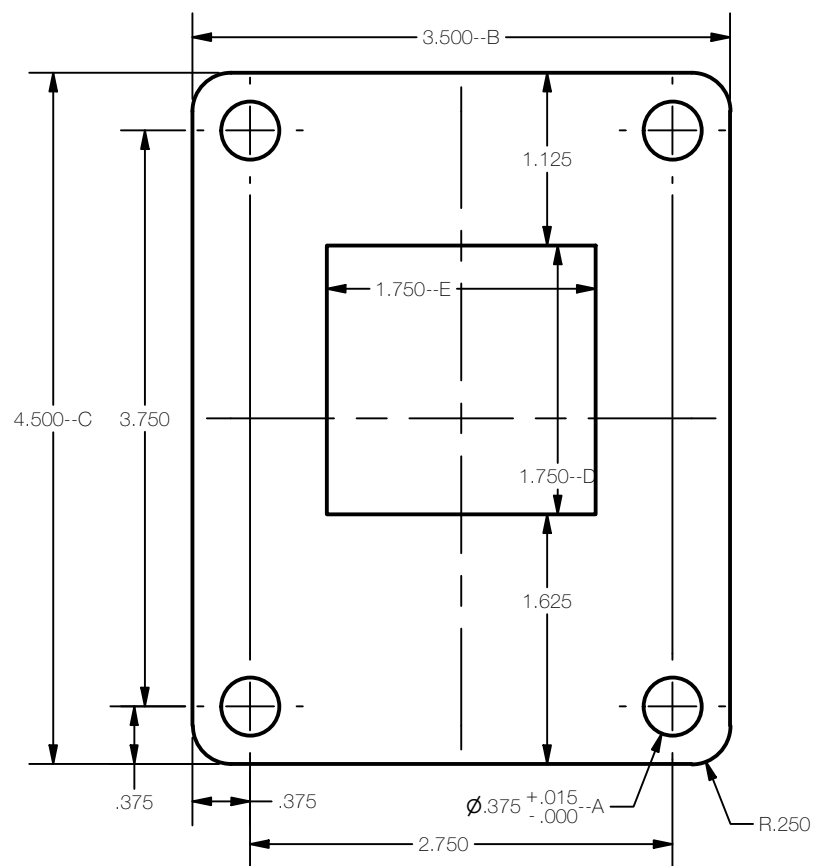
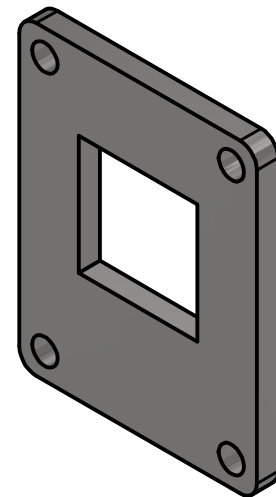
6 5 4 3 2 1

2

1

REVISION HISTORY

ZONE	REV	DESCRIPTION	DATE	APPROVED
N/A	C	UPDATE DIM	8/27/2020	DMN
	A		8/29/2019	JJ
	B		8/29/2019	JJ
A2	D	Reduced Window Size	01/22/2021	ABM



CRITICAL		
DIMENSION	TOLERANCE	DEVICE
A	+.015/-0.0	CALIPER
B	+/- .005	CALIPER
C	+/- .005	CALIPER
D	+/- .005	CALIPER
E	+/- .005	CALIPER



PART #:  
279260

PART NAME:  
ANGLE FOOT (SS).ipt



DRAWN BY:  
JJJ

DATE:  
8/29/2019

STATUS:  
Released

TOLERANCES  
.X = ± .030  
.XX = ± .015  
.XXX = ± .005

CYCLE TIME:

MATERIAL  
SS

SIZE:  
A

SCALE:  
1 / 2

REV:

2

1

