


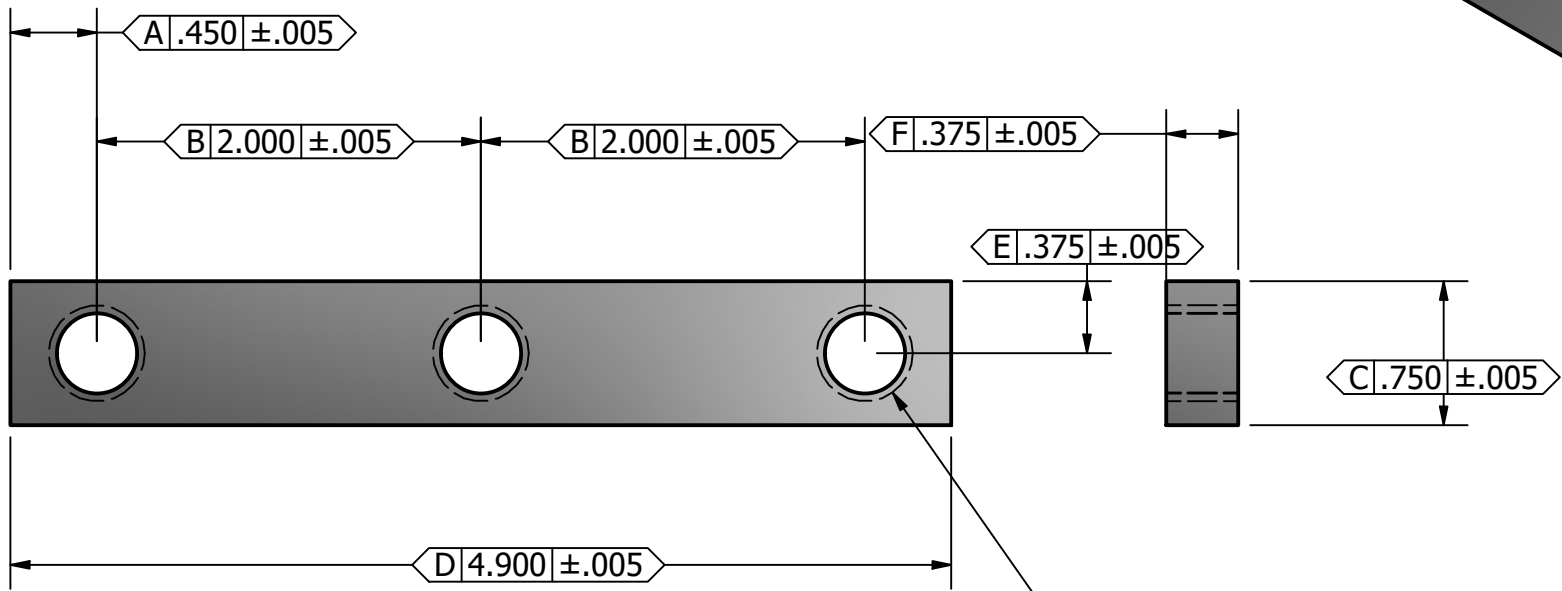
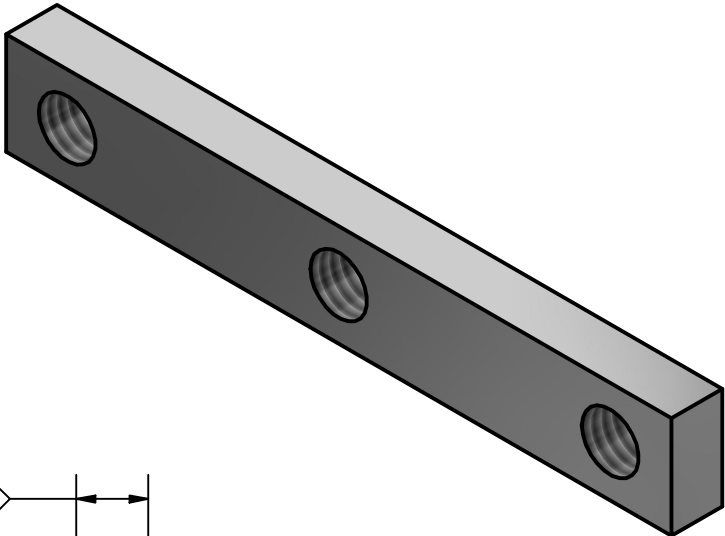
A-B	+/- .015	CALIPER
F	+/- .005	CALIPER
C	+/- .010	CALIPER
D-E	+/- .005	CALIPER
DIM	TOLERANCE	DEVICE
CRITICAL INSPECTIONS		

REV	DESCRIPTION	DATE	APPROVED BY
0	INITIAL RELEASE	5/28/2021	
REVISION HISTORY			

	Part Number: 562477	Tolerance: .X" +/- .03" .XX" +/- .015" .XXX" +/- .005" X/X" +/- 1/16" X° +/- 0.5° Or as Specified
	Part Description: Aluminum Side Mount Plate Bolt On	
Revision: 0	Material: Aluminum 6061 - T6 Finish: Aluminum - Flat	
Sheet 1 of 1		

NOTES:

1. CLEAR ANODIZE MIL-A-8625 TYPE II CLASS 1<ACID ETCH>



1/2-13 UNC - 2B THRU. X3 (G)

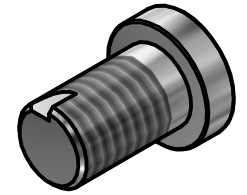
A-F	+/- .005	CALIPER
G	CHECK	GAUGE
DIM	TOLERANCE	DEVICE
CRITICAL INSPECTIONS		

0	INITIAL RELEASE	5/28/2021	
REV	DESCRIPTION	DATE	APPROVED BY
REVISION HISTORY			



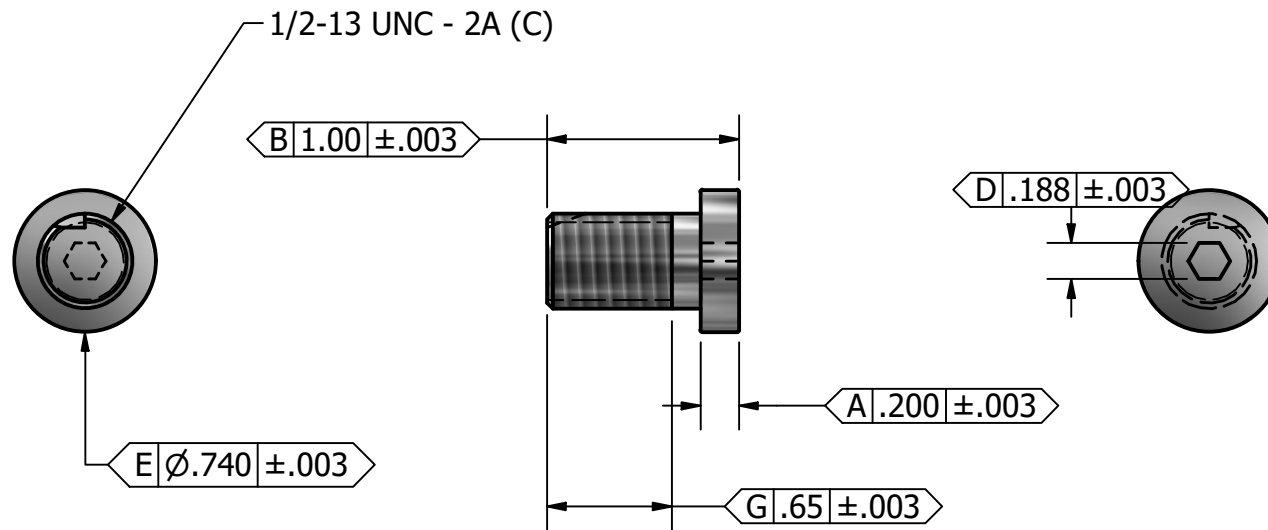
Part Number: 561235
Part Description: Bracket - Side Post Threaded
Revision: 0
Material: Aluminum 6061 - T6 Finish: Anodized - Clear
Sheet 1 of 1

Tolerance:	
.X"	+/- .03"
.XX"	+/- .015"
.XXX"	+/- .005"
X/X"	+/- 1/16"
X°	+/- 0.5°
Or as Specified	



NOTES:

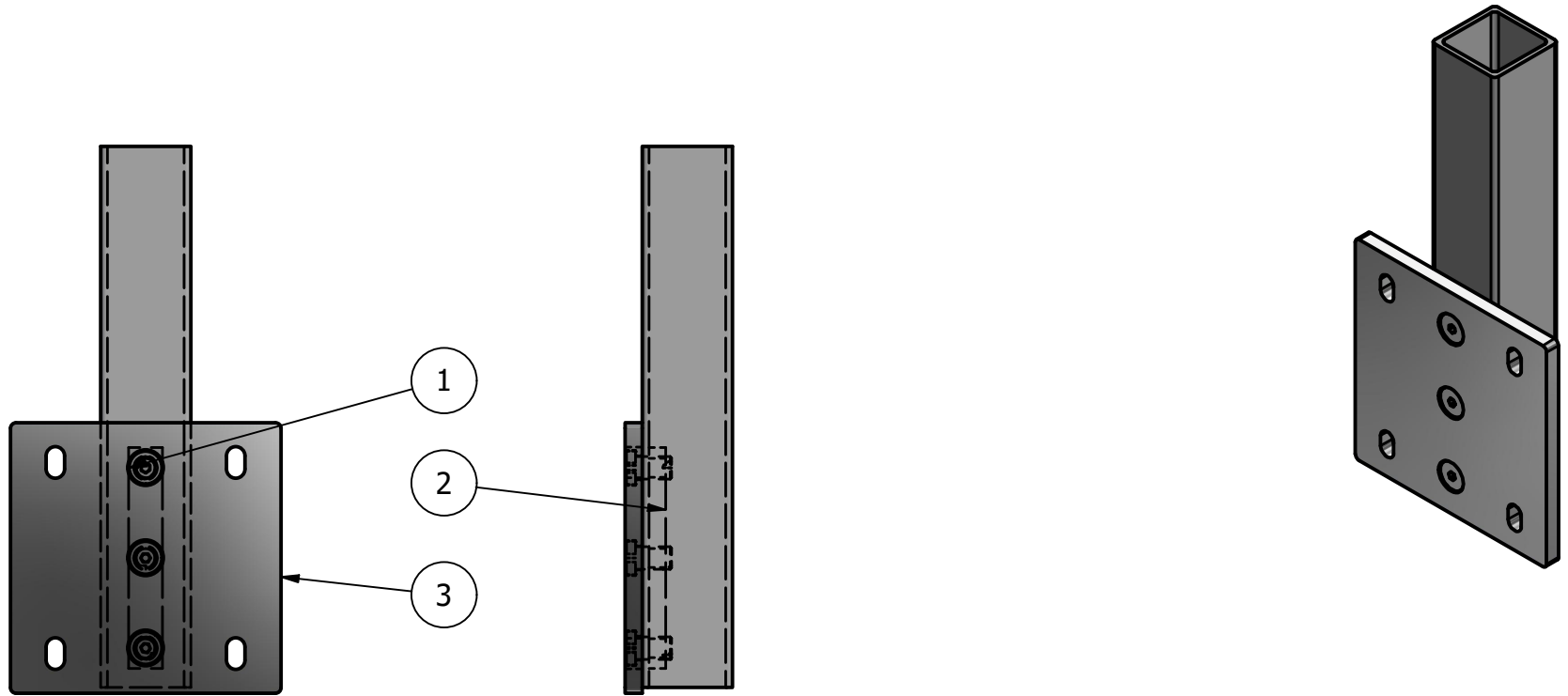
1. CLEAR ANODIZE MIL-A-8625 TYPE II CLASS 1<ACID ETCH>




A	+/- .003	CALIPER
G	+/- .003	CALIPER
B	+/- .015	CALIPER
C	CHECK	GUAGE
D	+/- .003	CALIPER
E	+/- .003	CALIPER
DIM	TOLERANCE	DEVICE
CRITICAL INSPECTIONS		

0	INITIAL RELEASE	5/28/2021	
REV	DESCRIPTION	DATE	APPROVED BY
REVISION HISTORY			

	Part Number: 561224	Tolerance: .X" +/- .03" .XX" +/- .015" .XXX" +/- .005" X/X" +/- 1/16" X° +/- 0.5° Or as Specified
	Part Description: Screw - Post Side Mount Aluminum	
Revision: 0	Material: Aluminum 6061 - T6 Finish: Aluminum - Flat	
Sheet 1 of 1		



PARTS LIST			
ITEM	QTY	PART NUMBER	DESCRIPTION
1	3	561224	Screw - Post Side Mount Aluminum
2	1	561235	Bracket - Side Post Threaded
3	1	562477	Aluminum Side Mount Plate Bolt On

								Part Number: 562519	Tolerance: .X" +/- .03" .XX" +/- .015" .XXX" +/- .005" X/X" +/- 1/16" X° +/- 0.5° Or as Specified
		A				Revision: A		Part Description: Assembly - Side Mount Post Bolt Together	
DIM	TOLERANCE	DEVICE	REV	DESCRIPTION	DATE	APPROVED BY	Material:		Finish:
CRITICAL INSPECTIONS			REVISION HISTORY				Sheet 1 of 1		