



VIEWRAIL SIGNATURE POSTS



Signature Posts

Viewrail is America's leading producer of frameless glass systems. Our Surface Mount Talon Spigot is sustainably made from a single piece of aircraft-grade aluminum. By bypassing the need for welding, our aluminum Glass Surface Talon is the only of its kind in North America to be certified by the International Code Council.

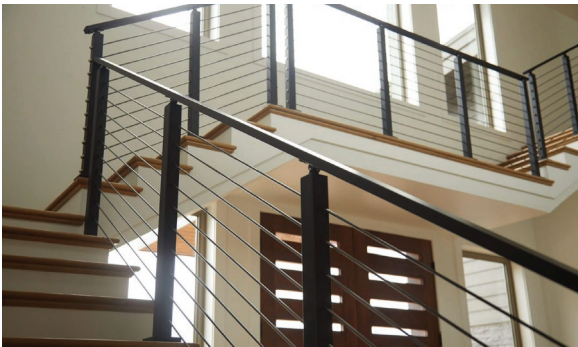
Surface Talons have a sleek, minimal profile to help maximize the view, and they're designed for quick and easy install – just mount the talon to the surface, then tighten and adjust the glass using our proprietary hardware. With their innovative design and durable construction, Surface Mount Talon Spigots do the work for you.

We understand each project is unique, so our talons need to stand up to even the harshest environments.

That's why each Talon is anodized before being covered with our 2605 Platinum powder coat. That way each Talon receives two coastal-rated finishes.

When it comes to responsibly-made, thoroughly-tested frameless glass systems, there is no competition.

Viewrail Signature Posts



Tech Specifications

Material: 6061 Aluminum (Aircraft Grade), 304 SS, 2205 SS

Finishes: Custom powder coated to order or brushed stainless

Height: Up to 42" Tall (System Height)

Standard Spacing: 4' on center

Mount Type: Core Drilled, Surface Mount, Special Application, Side Mount or Bump Out

Post Size: 2" X 2" Tube

Infill Options: Cable, 2205 Rods, or Glass

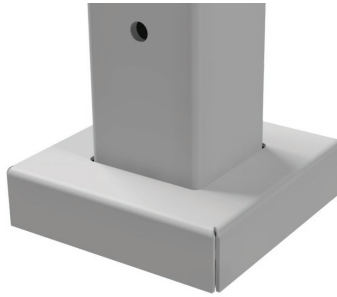
Compliance: ICC, IBC International Building Code® (2015,2018,2021), IRC International Residential Code® (2015, 2018, 2021)

Mounting Styles



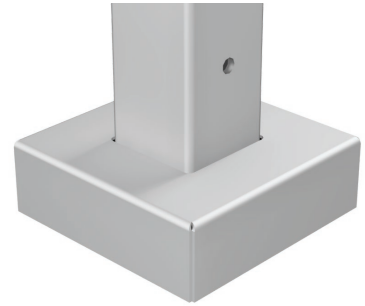
Core Drill

The Core drill post is designed to be plunged into concrete. The post is 6 1/4" long at the base.



Surface Mount

The Surface Mount post plate is the flagship post product. It sits on a 3.75" X 3.75" plate and is used for a majority of surface mount projects.



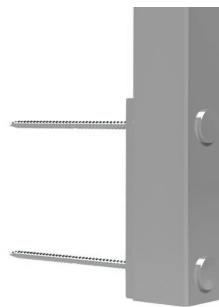
Special Application

The special application post foot plate was designed to be mounted on solid surfaces like concrete or stone. The footplate is 4.5" X 4.5".



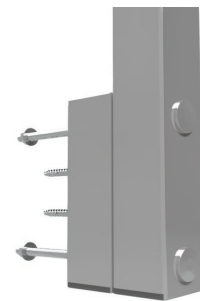
Side Mount Post

The standard side mount post sits on a 6" X 5-1/2" plate. Depending on the post composition the plate ranges from .3125" to .375" thick. The aluminum is a bolt together style and the stainless is welded on.



Slim Side Mount

The slim side mount post was designed similar to the standard side mount post but with a minimal footprint. The aluminum is a bolt together that sticks.



Bump Out Side Mount

The bump out side mount post was designed to go around deeper fascias. The mounting plate is 2" deep and 6" tall.

Post Top Styles

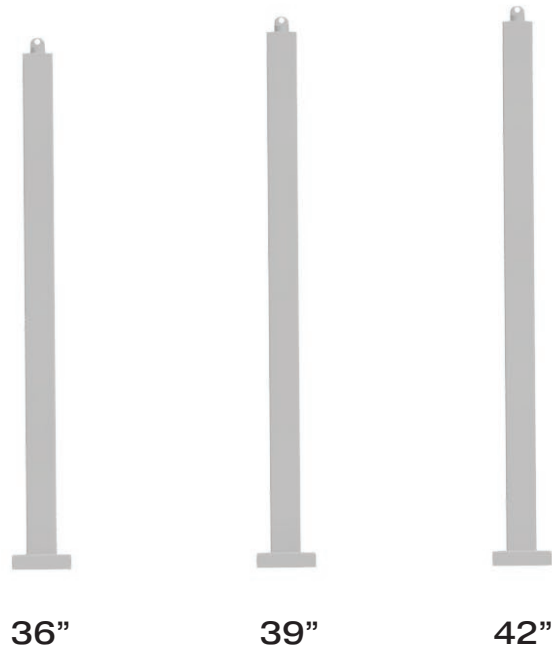


Flat Top Post



Universal Top Post

Standard System Heights



Post Gauges

